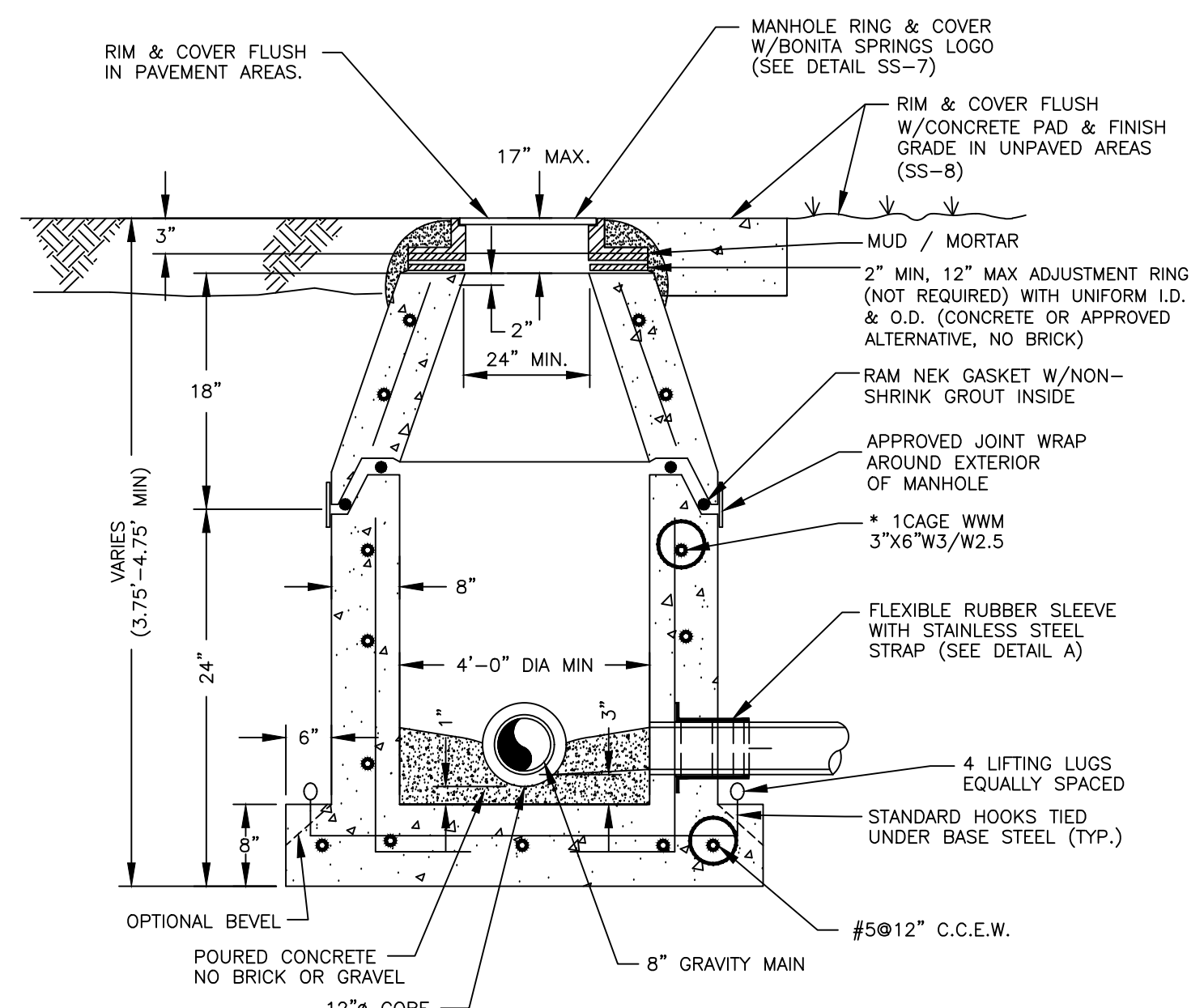
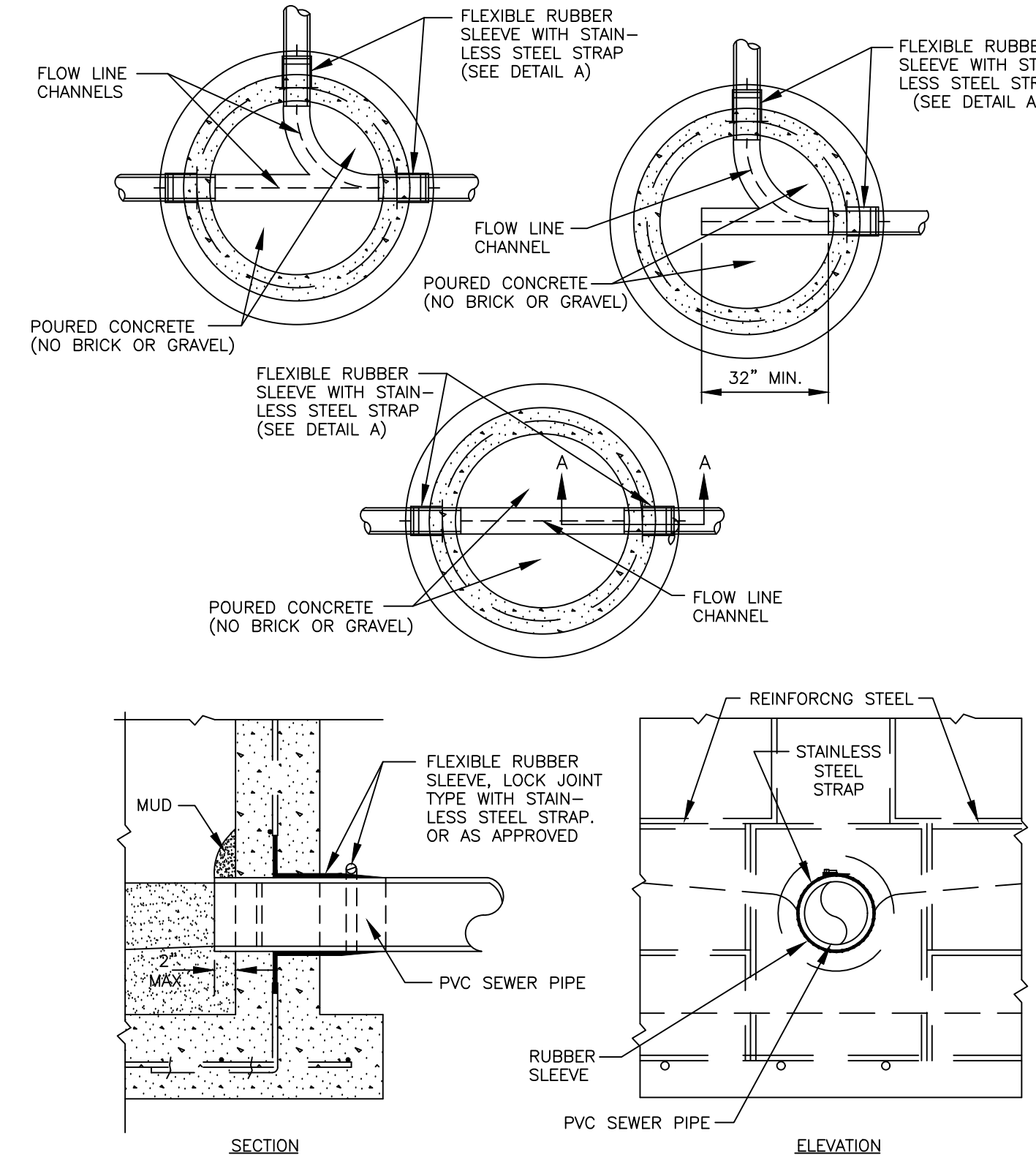


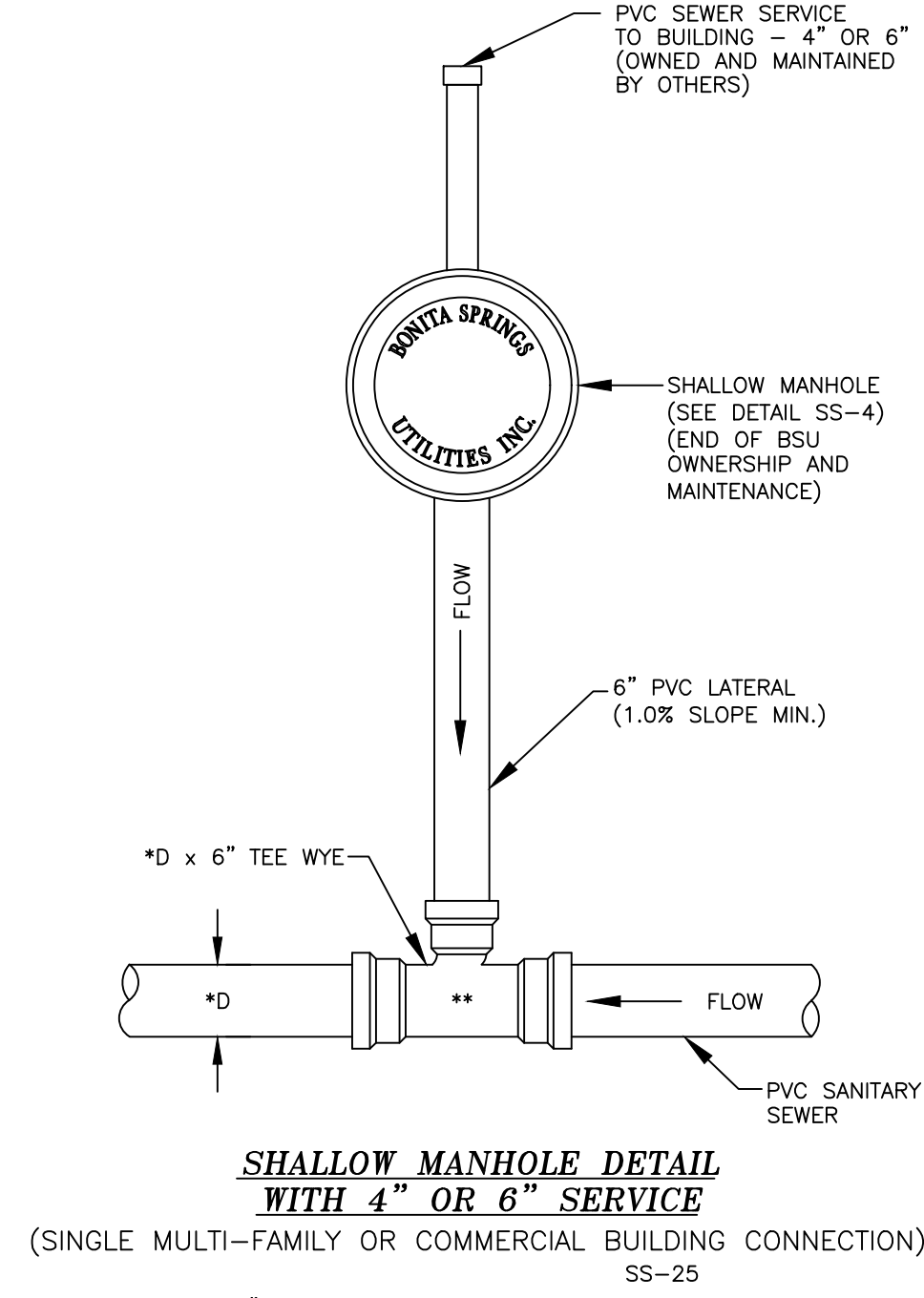
**PRECAST MANHOLE - CONCENTRIC**  
SS-1



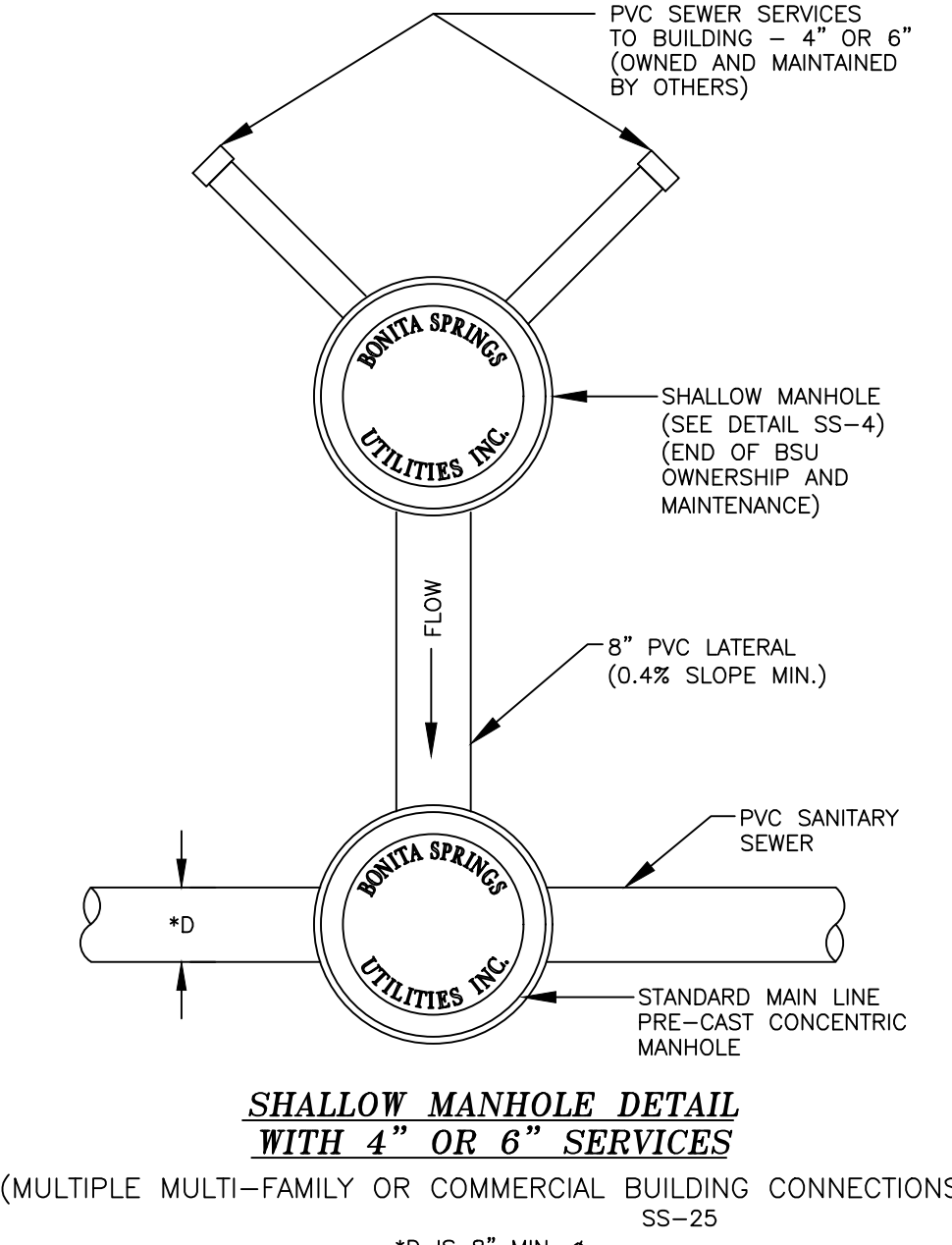
**SHALLOW MANHOLE**  
SS-4



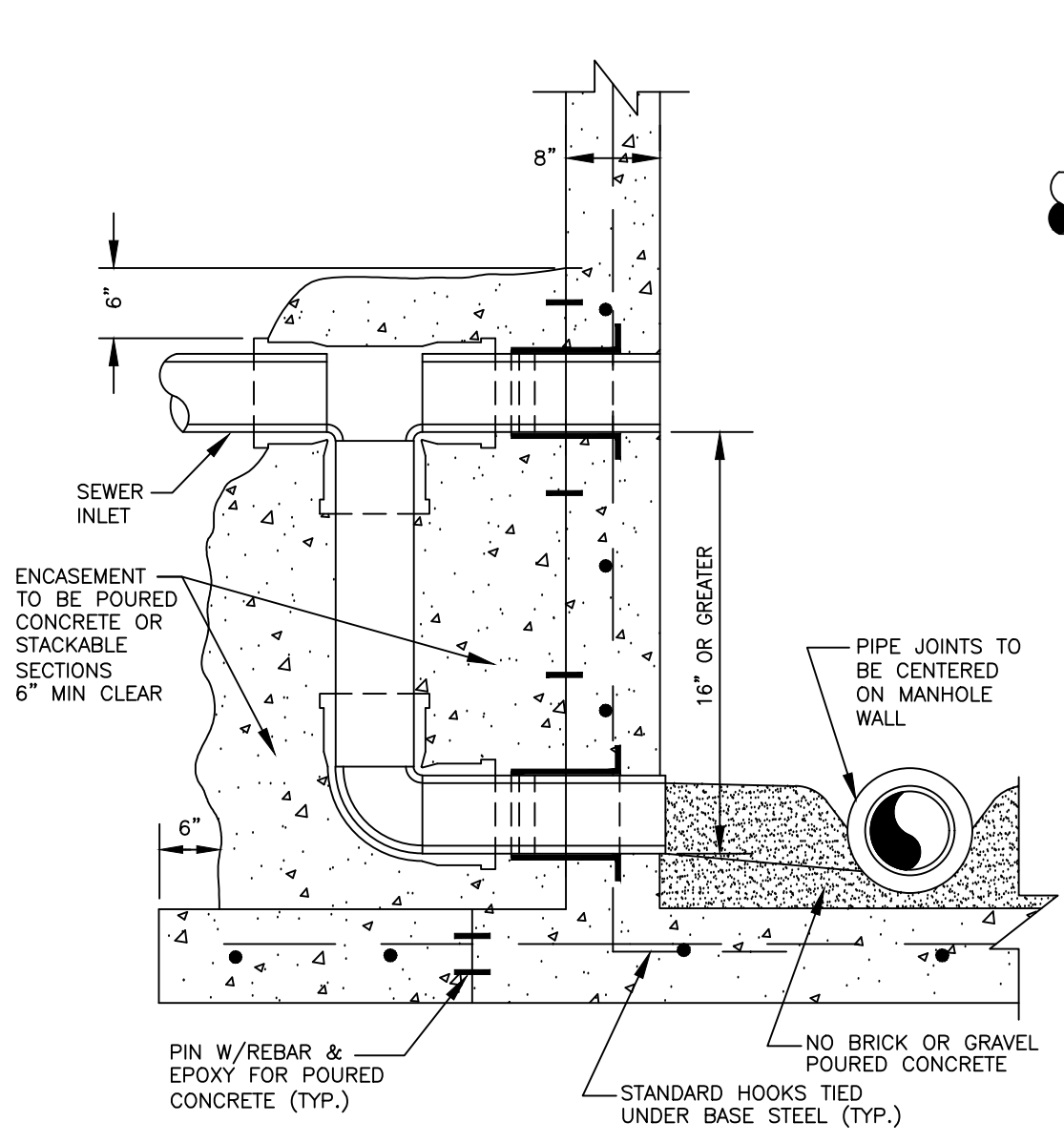
**FLOW LINE CHANNELS**  
SS-6



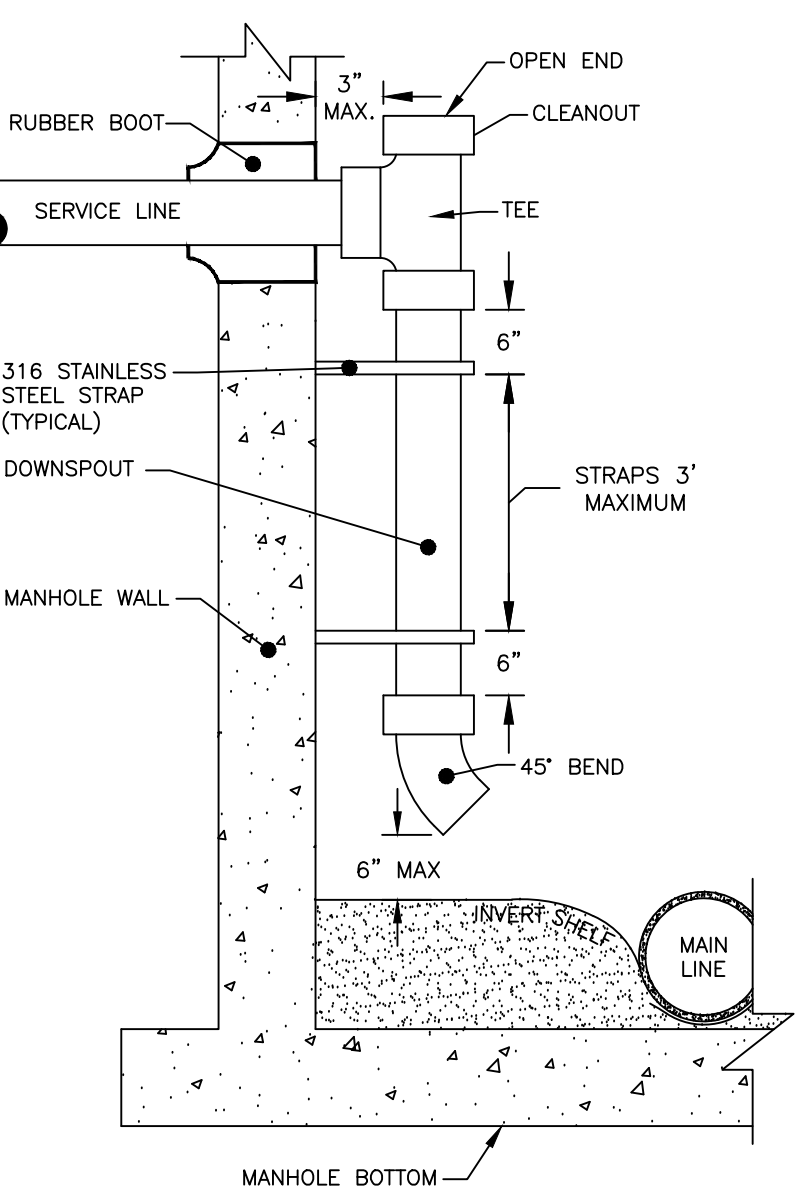
**SHALLOW MANHOLE DETAIL WITH 4" OR 6" SERVICE**  
(SINGLE MULTI-FAMILY OR COMMERCIAL BUILDING CONNECTION)  
SS-25



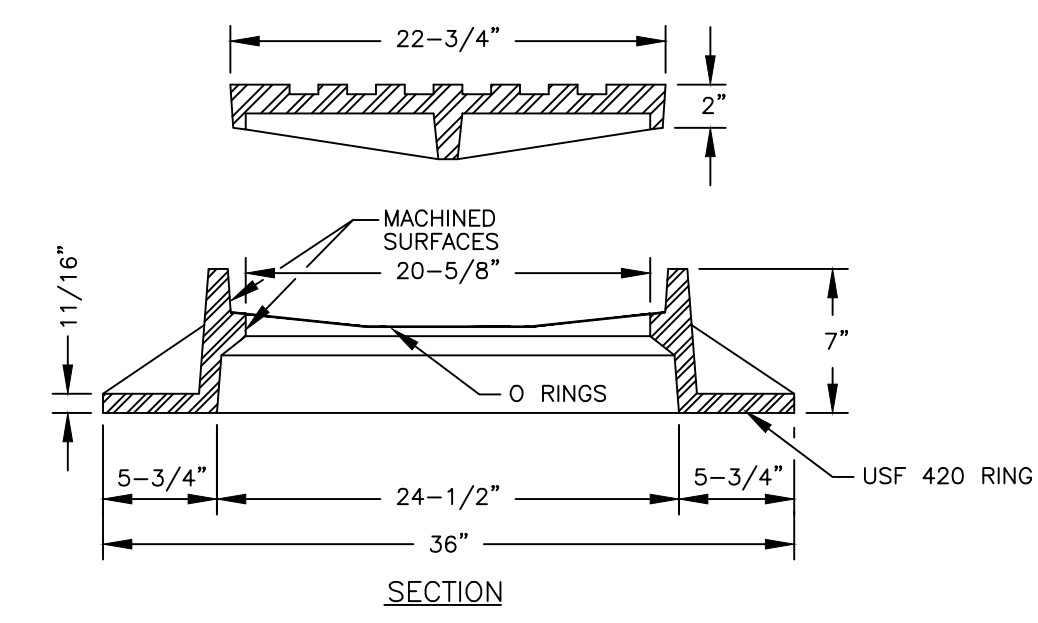
**SHALLOW MANHOLE DETAIL WITH 4" OR 6" SERVICES**  
(MULTIPLE MULTI-FAMILY OR COMMERCIAL BUILDING CONNECTIONS)  
SS-25



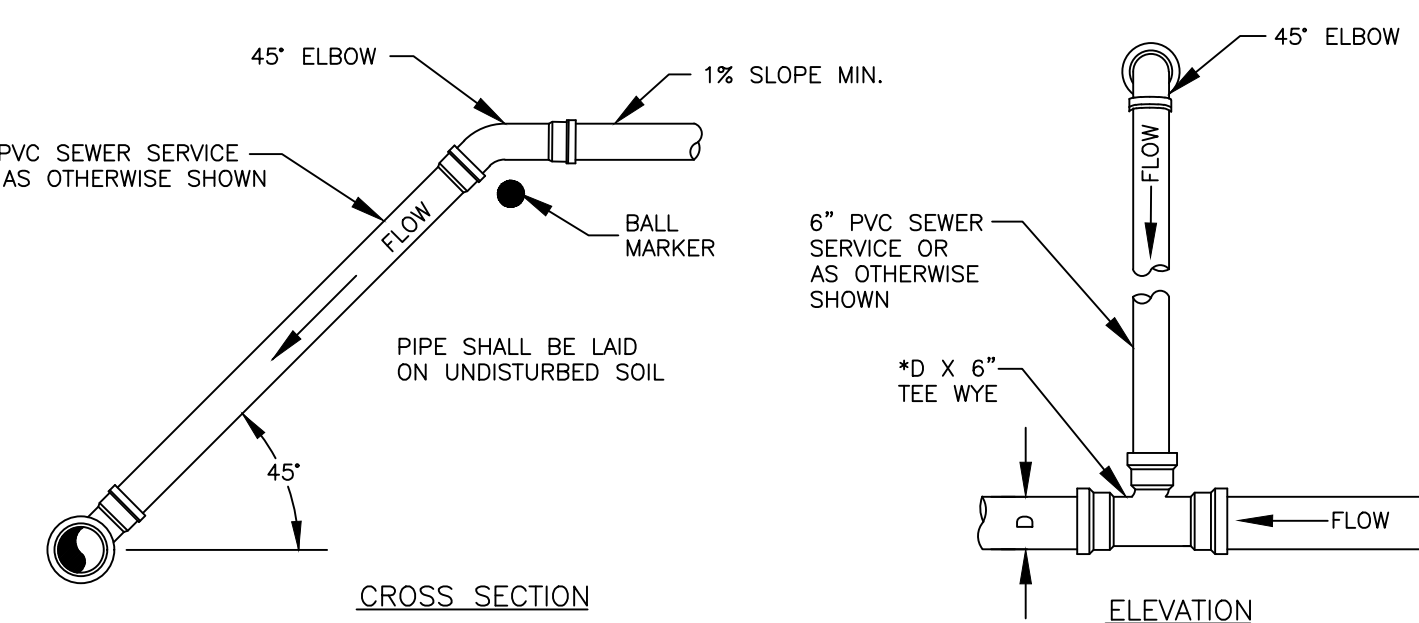
**EXTERNAL DROP MANHOLE CONNECTION**



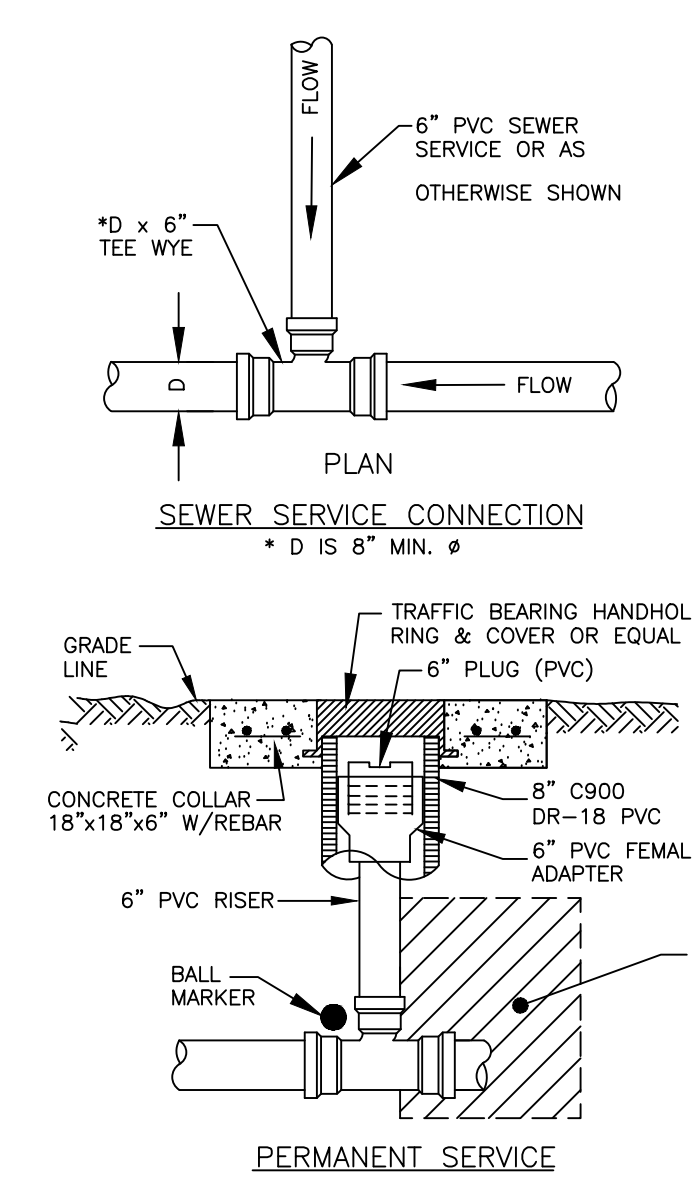
**INTERNAL DROP MANHOLE CONNECTION**  
(WITH WRITTEN BSU APPROVAL ONLY)



**SECTION**

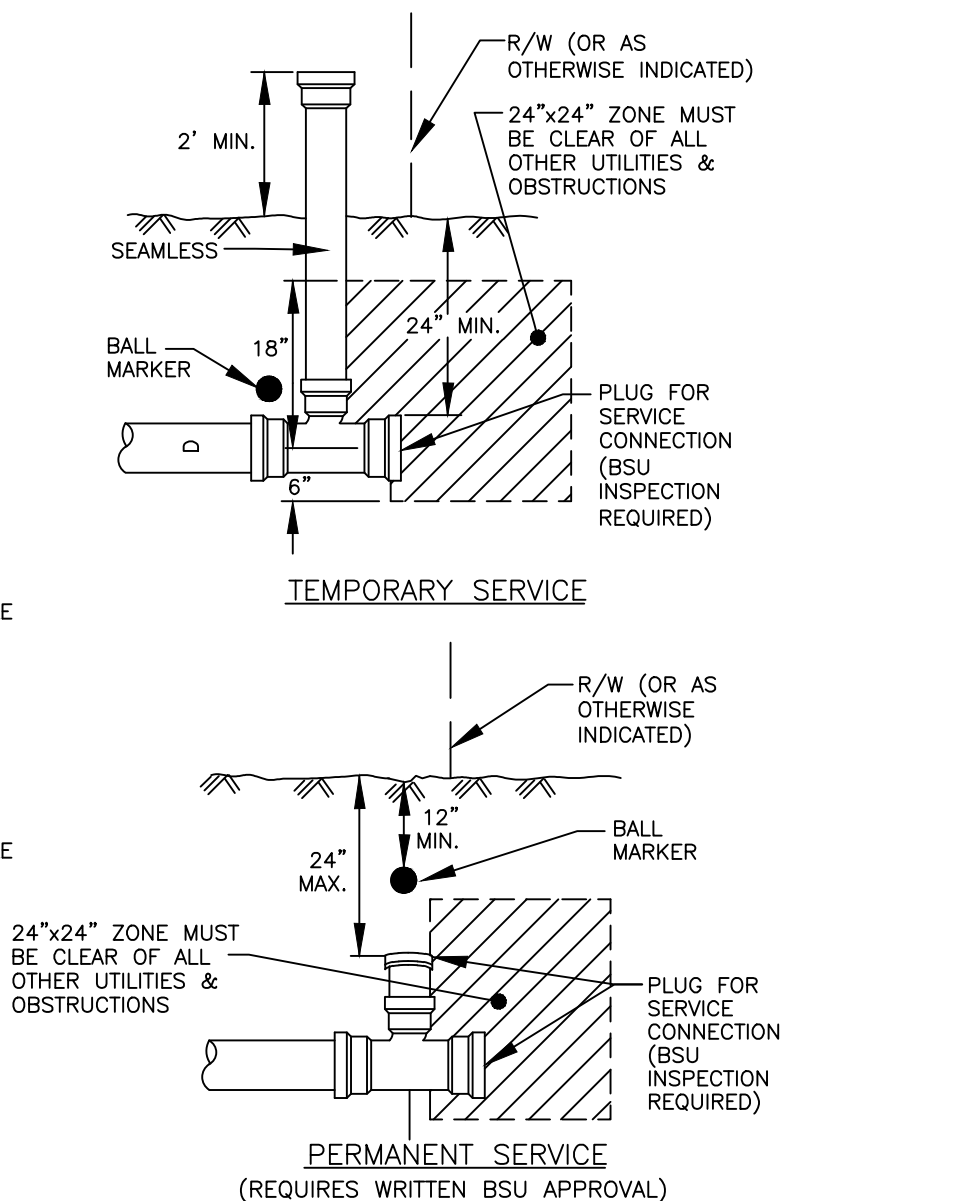


**SEWER CONNECTION FOR DEPTHS OVER 8 FEET**  
SS-10



**SEWER SERVICE CONNECTION**  
\* D IS 8" MIN. Ø

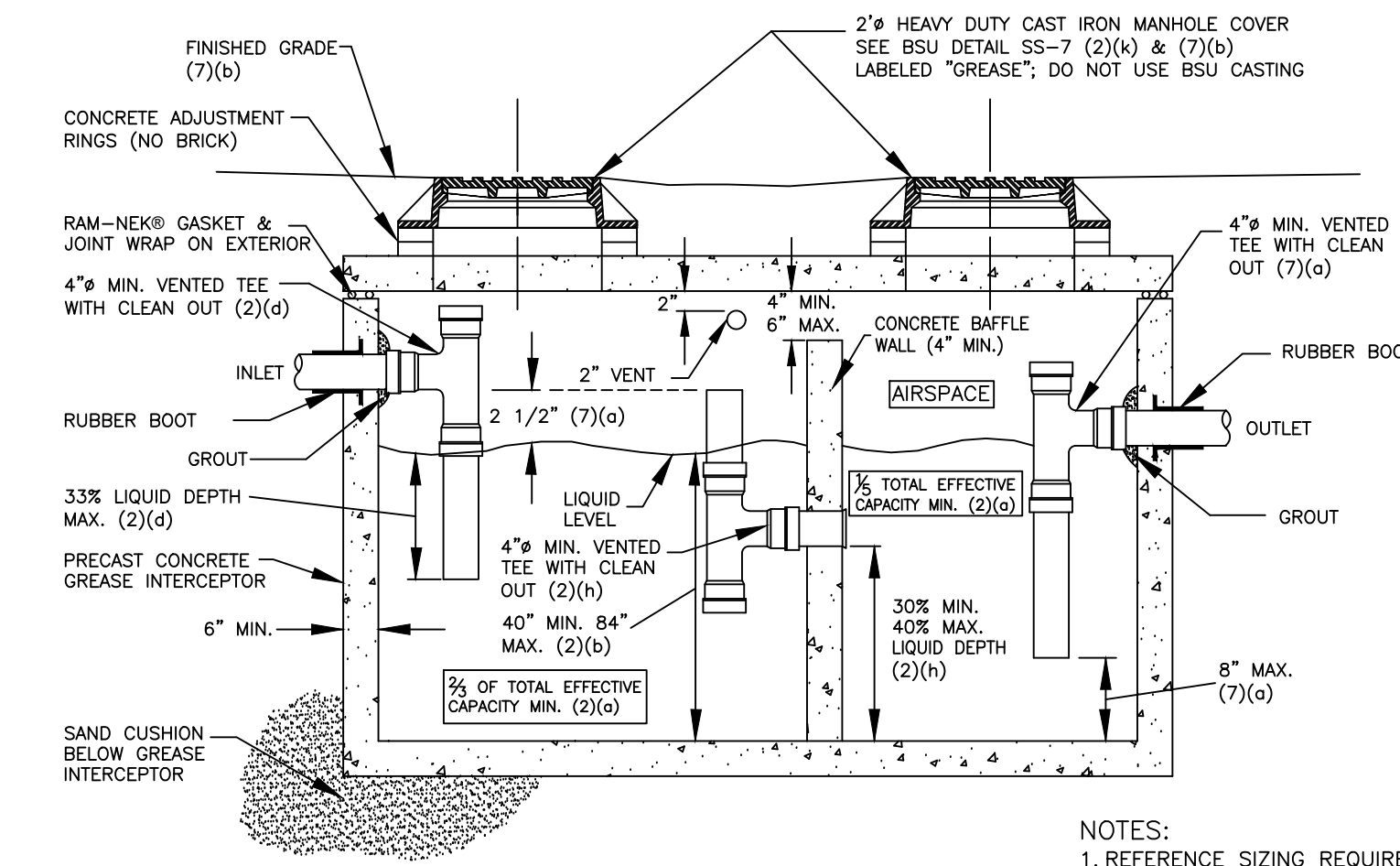
**PERMANENT SERVICE**



**TEMPORARY SERVICE**

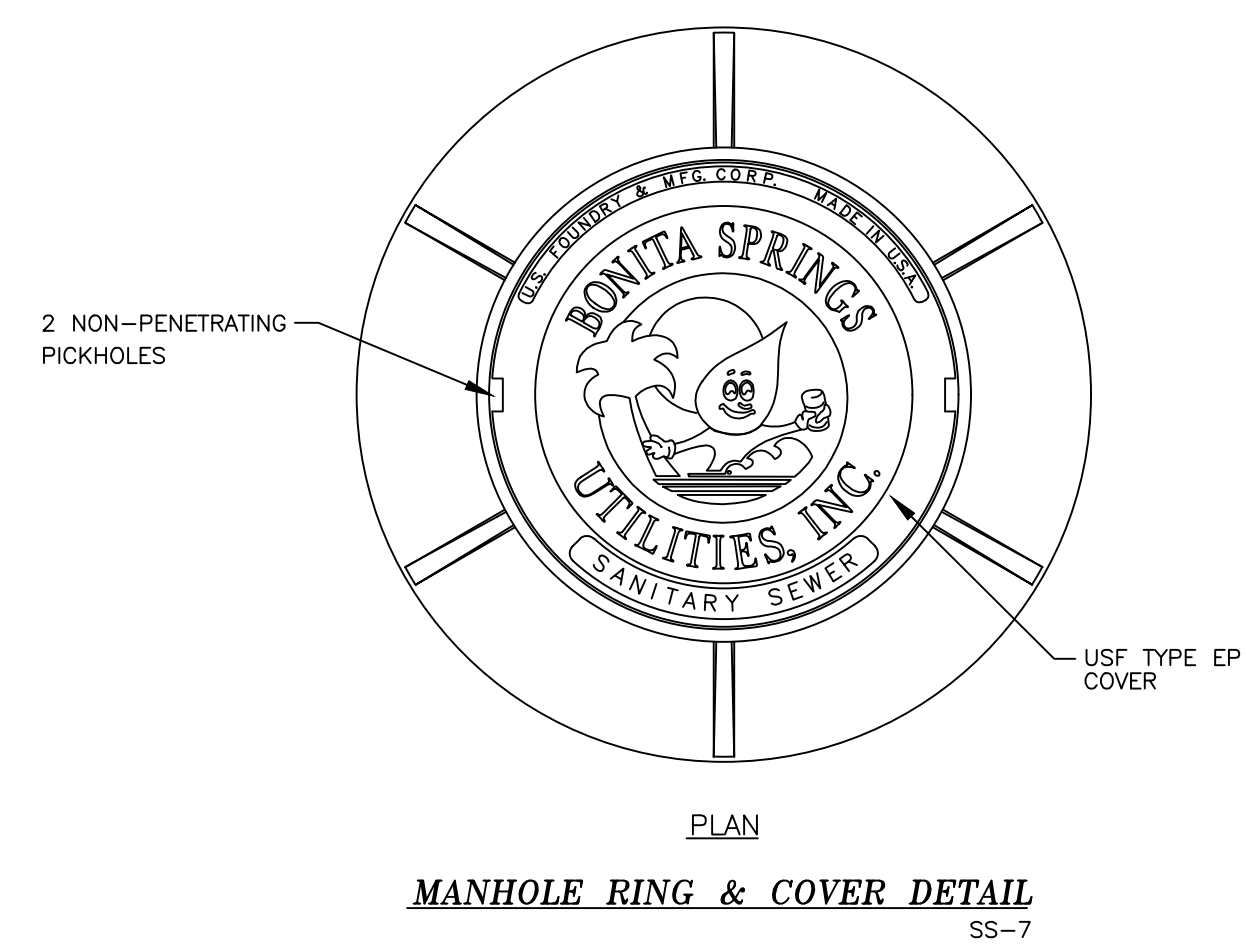
**PERMANENT SERVICE**  
(REQUIRES WRITTEN BSU APPROVAL)

**DROP MANHOLE CONNECTIONS**  
SS-3



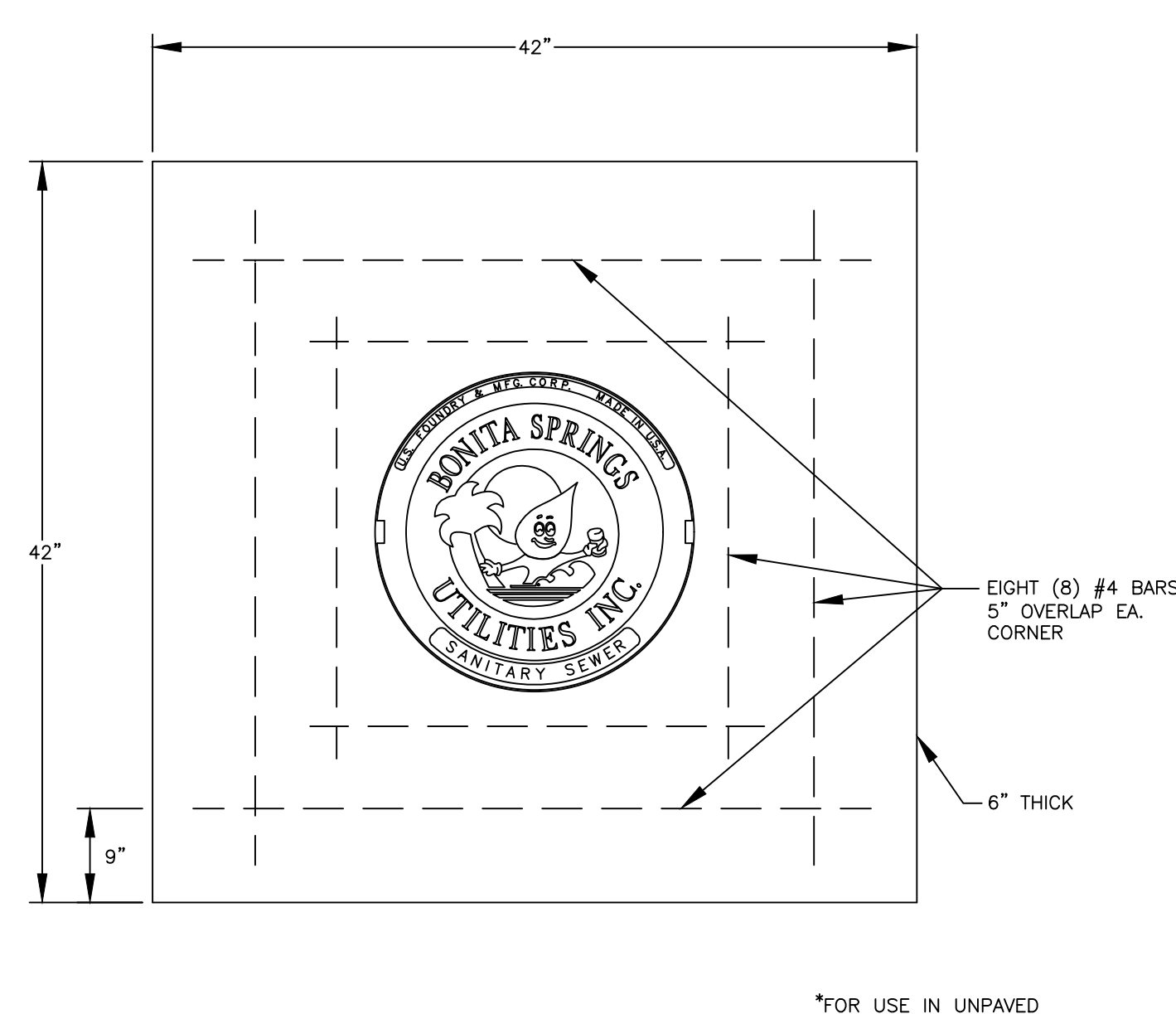
**GREASE INTERCEPTOR**  
SS-11

- NOTES:  
1. REFERENCE SIZING REQUIREMENTS WITHIN THE STANDARD SPECIFICATIONS  
2. (7)(x) REFERS TO SECTION IN FLORIDA ADMINISTRATIVE CODE CHAPTER 64E-6.013  
3. TRAFFIC RATED PER F.A.C. 64E-6.013 (1)(f)



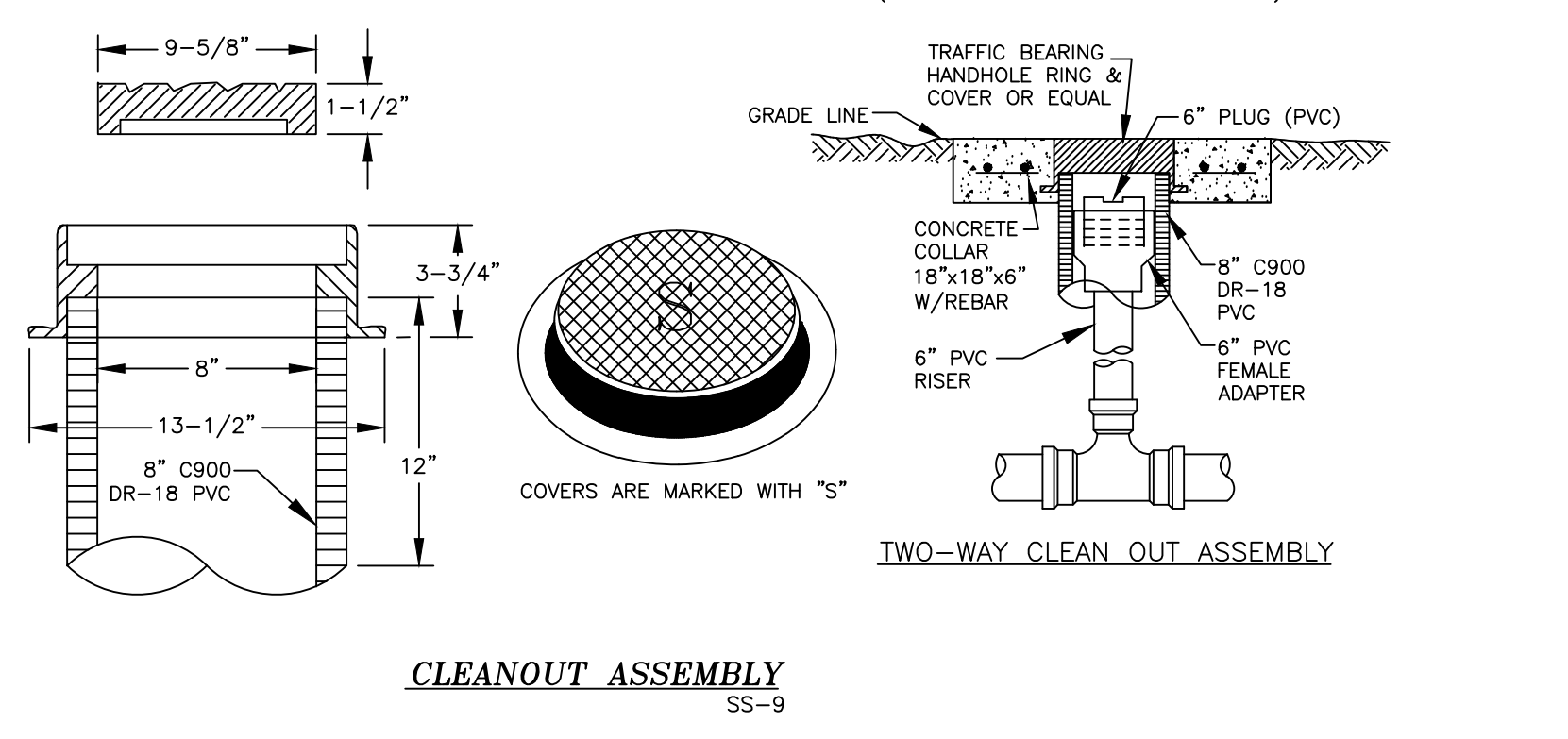
**MANHOLE RING & COVER DETAIL**  
SS-7

\* COVER W/BSU CASTING NOT TO BE USED FOR GREASE INTERCEPTORS; GREASE INTERCEPTOR COVERS TO BE LABELED "GREASE".



**MANHOLE CONCRETE COLLAR**  
SS-8

\*FOR USE IN UNPAVED AREAS AND/OR AT THE DISCRETION OF BSU



**CLEANOUT ASSEMBLY**  
SS-9

B.S.U. DETAIL SHEETS MUST REMAIN AS IS (NO ALTERATIONS)  
IF ADDITIONAL DETAILS ARE REQUIRED SUBMIT ON SEPARATE SHEET

CLIENT:	PROJECT:
---------	----------

	TITLE:	SCALE: NOT TO SCALE
	WASTEWATER DETAILS	DATE: JANUARY 2018
	11900 E. TERRY STREET	DWG #: WWDDET.DWG
	BONITA SPRINGS, FLORIDA 34135	SHEET OF
	PHONE: (239) 992-0711 FAX: (239) 992-9223	

DETAIL SS-5 DELETED  
DETAIL SS-2 DELETED